

**SCHEDULE FOR INTERIOR FURNISHING WORK FOR SME BRANCH (GROUND FLOOR) SBI , CONSTRUCTION OF BUILDING AT THRISSUR -**

Sl. No.	Qty.	Description	Unit	Rate	Rate in words	Amount
1	58.00	<b>Fully Glazed Partitions</b>  Slim line partition of approved make :- supply and installation of full height straight glass partition 12mm thick toughened glass and proprietary electroplated as approved colour with aluminium sections of the SLIM LINE TWIN STYLE TWIN PRO SECTION NO. 6633 (35mm x 25mm) and 6634 (35mm x 20mm) male and female sections providing inside with rubber gaskets in top & bottom upto false ceiling level. The glass joints shall be filled with silicon sealant on both side .Rate shall include for providing transport charges, handling, loading and unloading, Installation, protecting the module and glass till handing over, testing, commissioning all necessary hardware's, scaffolding, wastage, Structural supports if any, etc. complete and all as per manufacturers specifications as directed. Etching stickers are to be provided as per design. The partition is to be firmly fixed to the floor and ceiling. The partition up to false celing only be measured.	M <sup>2</sup>			
1a	9.00	<b>Fully Glazed Door</b>  Providing and fixing fully glazed door of 12 mm thick toughened glass with pencil polish edges alround with etching patterns and bevelled at edges.  The door shall be fixed with DORMA patch fitting assembly inclusive of top and bottom patches, floor springs, bottom locks, SS brushed handle of 60 cm long and 2.5 cm dia .Lock of approved make etc to be fixed to the door, the edge of the glass to be polished	M <sup>2</sup>			
2a	13.00	<b>Front Side Glazing with Door (Double shutter)</b>  Providing and fixing fully glazed door of 12 mm thick toughened glass with pencil polish edges alround with etching patterns and bevelled at edges.  The door shall be fixed with DORMA patch fitting assembly inclusive of top and bottom patches, floor springs, bottom locks, SS brushed handle of 60 cm long and 2.5 cm dia .Lock of approved make etc to be fixed to the door, the edge of the glass to be polished	M <sup>2</sup>			

Sl. No.	Qty.	Description	Unit	Rate	Rate in words	Amount
2b	32.00	<p><b>ACP Partition - ATM</b></p> <p>Providing and fixing the ACP work all round the inside wall for the ATM room . ACP of approved make (Alstone, Alstrong , Aludecor, Eva bond or approved equivalent) of total thickness 4mm, out of which 0.5mm shall be the sheet thickness on either sides. To be cut to sizes/shade, chamfered and bent using router machines and curve using standard rolling machines, without leaving any marks on the sheets, the entire sheet shall be fixed on the both side of prefabricated framework using 50mmx25mmx1.5mm thick aluminium 9836 Hindalco extuded sections joined horizontally and vertically using standard cleats and fastners. The entire framework to be fixed on the wall or floor beams using anchir bolts, etc. including cost and conveyanc of all materials to site, lead , lift and labour charges for erection , hire charges for scaffolding etc, complete as directed.</p>	M <sup>2</sup>			
3	57.00	<p><b>Counter partitions (120cm (H) )</b></p> <p>The partitions are made of 12mm thick glass for a height of 45cm above the solid partiton as per the drawing. The edges of the glass to be polished.</p> <p>The bottom portion of the partition is of double skin type for a height of 75cms. In the frame work verticals and horizontals are made of Aluminum square sction 5cmx 5cm to a max. distance of 60cm centre to centre</p> <p>Frame work is covered with 9 mm thick marine grade plywood (IS 303) on both sides and finished with 1.0 mm thick laminate of approved make.</p> <p>The partition is firmly fixed to the floor. Necessary wicket doors are to be provided as per the drawing. Necessary handles,hinges , tower bolts, hydraulic door closer , auto closing lock (Godrej/equivalent ) etc. are to be provided for the wicket door. Teak / Beech wood polished beadings/ grooves in laminate etc to be provided as shown in the drawing.</p>	M <sup>2</sup>			
4	65.00	<p><b>Double Skin Solid Partition</b></p> <p>The partitions are of double skin type. The partition should be firmly fixed on floor/ counter/ wall made out of aluminium section of 63.5x38.1x1.2 mm thick of INDAL/JINDAL as internal frame structure placed horizontally &amp; vertically in 60x60 cm interval as shown in the drawing which is covered with 9 mm thick marine grade plywood(IS 303) on both sides and finished with 1 mm thick laminate on both sides .</p>				

Sl. No.	Qty.	Description	Unit	Rate	Rate in words	Amount
		Skirting for a height of 10cm with 12mm thick teak wood planks finished with melamine matt finish is to be provided. The partition is to be firmly fixed to the floor and ceiling. Grooves in laminate to be provided as shown in the drawing. The partition up to false ceiling only be measured.	M <sup>2</sup>			
4a	8.00	<b>Double Skin Solid Door</b> Door is to be provided with country wood frame of size 3.81cmx5cm around and intermediates at 60cmc/c and it is covered with 9 mm thick marine grade plywood on both sides and finished with 1mm thick laminate.Necessary grooves in laminate to be provided. A 8 mm thick glass is provided at a height of 105cm from bottom.Necessary Fittings such as 4Nos. 125 mm Anodised Aluminium Butt hinges, 1No. godrej lock of approved make , 1 pair of stainless steel handle to each shutter, automatic hydraulic door closer etc. to be provided. Skirting for a height of 10cm with 12mm thick Teak wood planks finished with melamine matt to be provided.	M <sup>2</sup>			
5	33.00	<b>Fire Rated Cement Partition</b> The partitions are of double skin type. The partition should be firmly fixed on floor/ counter/ wall made out of GI rectangular section of 44.5x83.5x2.5 mm thick of internal frame structure placed horizontally & vertically in 60x60 cm interval as shown in the drawing which is covered with 6 mm thick fire rated cement board on both sides finished with 2 coat putty and 2 coats of plastic emulsion paint with roller brush of approved colour to match the interior over the approved primer . The partition is to be firmly fixed to the floor and ceiling. The partition up to false ceiling only be measured.	M <sup>2</sup>			
5a	5.00	<b>Partly Glazed Door</b> Door is to be provided with Aluminium frame of size 44.5x83.5x2.5cm around and intermediates at 60cmc/c and it is covered with 6 mm thick fire rated cement board on both sides and finished with 2 coat putty and 2 coats of plastic emulsion paint with roller brush of approved colour to match the interior over the approved primer . A 8 mm thick glass is provided at a height of 75cm from bottom.Necessary Fittings such as 4Nos. 125 mm Anodised Aluminium Butt hinges, 1No. godrej lock of approved make , 1 pair of stainless steel handle to each shutter, automatic hydraulic door closer etc. to be provided.	M <sup>2</sup>			

Sl. No.	Qty.	Description	Unit	Rate	Rate in words	Amount
6	12.00	<b>Semi partitions Glazed on table top &amp; sides</b>  The partitions are made of 12mm thick toughened glass to be fixed firmly to the beech wood frame of size 5x5cm polished with melamine matt finish as shown in the drawing for a height of 45cm above the solid partition. A slit of size 30x10 cm to be provided for cash transfer	M <sup>2</sup>			
7	36.00	<b>Column Panelling</b>  The frame work of panelling should be of aluminum rectangular section 5x2.5 cm both horizontally and vertically at 60 cm c/c which is covered with 17mm thick exterior grade MDF board finished with 3 mm thick Veneer & PU polish as per the drawing ( basic price of veneer 85/sqft) . Skirting for a height of 10cm should be provided as per the drawing.	M <sup>2</sup>			
8		<b>Cupboards</b>  The width and height of the cupboard is shown in the drawing. The cupboard is made of 17mm thick both side prelaminated exterior grade MDF board with exposed edges lipped with 2mm thick PVC edge band . The front portion of the cupboard is to be provided with openable shutters.  Necessary fittings such as 75mm brass hinges, locks of approved make, ball catches, handles etc should be provided. .Skirting for a height of 10cm should be provided as per the drawing.				
8a	16.00	<b>Cupboard 75 cm height</b>	M <sup>2</sup>			
8b	4.00	<b>Cupboard 90 cm height</b>	M <sup>2</sup>			
8c	14.00	<b>Cupboard 90 cm height with corian top</b>  The width and height of the cupboard is shown in the drawing. The cupboard is made of 17mm thick exterior grade both side prelaminated MDF board. The exposed faces finished with white PU finish as per the drawing. The exposed edges lipped with 2mm thick PVC edge band .  The front portion of the cupboard is to be provided with openable shutters. 6 mm thick white corian top is to be provided on top and the edges to be rounded and polished.  Necessary fittings such as 75mm brass hinges, locks of approved make, ball catches, handles etc should be provided. .Skirting for a height of 10cm should be provided as per the drawing.	M <sup>2</sup>			

Sl. No.	Qty.	Description	Unit	Rate	Rate in words	Amount
9	550.00	<p><b>False Ceiling (Plain Gypsum Board )</b></p> <p>Providing and fixing suspended false ceiling, which includes providing and fixing G.I perimeter channels of size 27mm, 0.5mm thick having one flange of 20mm and another flange of 30mm along with perimeter of ceiling, screw fixed to brick wall / partition with the help of nylon rawl plugs and screws.</p> <p>Then suspending G.I intermediate channels of size 45mm, 0.9mm thick with two flanges of 15mm each from the soffit at 1200mm centres in one direction and 600mm in other with ceiling angle of width 25x25x0.5mm thick fixed to soffit with G.I cleat &amp; steel expansion fasteners.</p> <p>Ceiling section of 0.5mm thickness having knurled wedge of 51.5mm and flanges of 26mm each with lips of 10.5mm are then fixed to intermediate channel with the help of connecting clips and in direction perpendicular to the intermediate channel at 457mm centres. 12.5mm tapered edge Moisture resistant gipboard is then screw fixed to ceiling sections with 25mm dry wall screw at 230mm centres.</p> <p>Screw fixing is done mechanically either with screw driver or drilling machine with suitable attachment. Finally the tapered and square edges of the boards are jointed and finished to a flush with requisite jointing compound, tapes and finished with 2 coat putty and 2 coats of plastic emulsion paint with roller brush of approved colour to match the interior over the approved primer</p> <p>Necessary steppings and cuttings for electrical fittings, security devices, fire fighting equipments etc. as per the directions at site and arrangements for fixing the electrical and other fittings are to be provided. (Refer ceiling plan).</p>	M <sup>2</sup>			
9b	50.00	<p><b>False Ceiling Grid system</b></p> <p>Provide and fix false ceiling with 60 x60 cms size Armstrong/ Saint gobain/ other approved makes 15mm thick acoustic mineral fibre boards with reveal edges, framework with Powder coated GI tee 25mm wide sections, all fittings and fixtures etc complete including providing cutouts for light fittings, AC diffusers, smoke detectors etc complete as per specifications.</p>	M <sup>2</sup>			
10	60.00	Providing and fixing Vertical Blinds of Vista or any approved equivalent make and approved Colour.	M <sup>2</sup>			

Sl. No.	Qty.	Description	Unit	Rate	Rate in words	Amount
11	1.00	<p><b>Table for Cash Officer 235x100x75 cm</b></p> <p>The size of Table is 235x100x75cm. The table is made out of 17 mm thick exterior grade both side prelaminated MDF board with exposed top edges lipped with 2mm thick PVC edge band . . The front elevation of the table is made of white laminate and blue laminate as per the drawing. Necessary grooves are to be provided. Exposed sides are finished with 1 mm thick blue &amp; white laminate as per the drawing.</p> <p>Drawers , keyboard tray are made of 17 mm thick exterior grade both side prelaminated MDF board with exposed top edges lipped with 2mm thick PVC edgeband as per the drawing. Necessary fittings such as steel slides, lock (Godrej/equivalent) , handles etc. of approved make are to be provided. One Drawer set contains three numbers are to be provided. Foot rest are made of 17 mm thick exterior grade both side prelaminated MDF board with PVC edge band knock down type bottom bush etc.30cm wide and 15cm height at one end and the other end is zero 60cm length fixed on the bottom side of the table etc. complete. Provision for cable manager is to be provided.</p>	No			
12	1.00	<p><b>Table for AGM 200x90x75 cm</b></p> <p>The size of Table is 200x90x75cm.The table is made out of 17 mm thick exterior grade both side prelaminated MDF board with exposed top edges lipped with 2mm thick PVC edgeband . 6 mm thick white corian top is to be provided on table top and the edges to be rounded and polished.The front elevation of the table is made of 12 mm thick toughened glass modesty panel as per the drawing. Necessary grooves are to be provided. Exposed sides are finished with 1 mm thick blue laminate .</p> <p>Drawers , keyboard tray are made of 17 mm thick exterior grade both side prelaminated MDF board with exposed top edges lipped with 2mm thick PVC edgeband as per the drawing. Necessary fittings such as steel slides, lock(Godrej/equivalent) , handles etc. of approved make are to be provided. One Drawer set contains three numbers are to be provided. Foot rest are made of 17 mm thick exterior grade both side prelaminated MDF board with PVC edge band knock down type bottom bush etc.30cm wide and 15cm height at one end and the other end is zero 60cm length fixed on the bottom side of the table etc. complete. 12 mm thick toughened glass is provided on table top and the edges of glass to be polished . Provision for cable manager is to be provided.</p>	No			

Sl. No.	Qty.	Description	Unit	Rate	Rate in words	Amount
13	8.00	<p><b>Table for Asst &amp; SWO 160x100x75 cm</b></p> <p>The size of Table is 160x100x75cm. The table is made out of 17 mm thick exterior grade both side prelaminated MDF board with exposed top edges lipped with 2mm thick PVC edgeband . 6 mm thick white corian top is to be provided on table top and the edges to be rounded and polished. The shape of the corian top is shown in the drawing . For the cured shape of corian top 6 mm flexy plywood is used. The exposed front portion of the table is made of Aqua blue shade of saint gobain lacquered glass as per the drawing. Necessary grooves are to be provided.</p> <p>Drawers , keyboard tray are made of 17 mm thick exterior grade both side prelaminated MDF board with exposed top edges lipped with 2mm thick PVC edgeband as per the drawing. . Necessary fittings such as steel slides, lock(Godrej/equivalent) , handles etc. of approved make are to be provided. One Drawer set contains three numbers are to be provided. Foot rest are made of 17 mm thick exterior grade both side prelaminated MDF board with PVC edge band knock down type bottom bush etc.30cm wide and 15cm height at one end and the other end is zero 60cm length fixed on the bottom side of the table etc. complete. Provision for cable manager is to be provided.</p>	No			
14	1.00	<p><b>Table for CM 160x80x75 cm</b></p> <p>The size of Table is 160x80x75cm. The table top and all the exposed faces are made of 17 mm thick exterior grade both side prelaminated MDF board lipped with 2 mm pvc edge band tape . The front elevation of the table is made of white laminate and blue laminate as per the drawing. Necessary grooves are to be provided. Exposed sides are finished with 1 mm thick blue &amp; white laminate .</p> <p>Drawers , keyboard tray are made of 17 mm thick exterior grade both side prelaminated MDF board , with exposed top edges lipped with 2mm thick PVC edgeband as per the drawing. . Necessary fittings such as steel slides, lock(Godrej/equivalent) , handles etc. of approved make are to be provided. One Drawer set contains three numbers are to be provided. Foot rest are made of 17 mm thick exterior grade both side prelaminated MDF board with PVC edge band knock down type bottom bush etc.30cm wide and 15cm height at one end and the other end is zero 60cm length fixed on the bottom side of the table etc. complete. Provision for cable manager is to be provided.</p>	No			

Sl. No.	Qty.	Description	Unit	Rate	Rate in words	Amount
15	1.00	<p><b>Dispatch Table 160x60x75 cm</b></p> <p>The size of Table is 160x60x75cm. The table top and all the exposed faces are made of 17 mm thick exterior grade both side prelaminated MDF board lipped with 2 mm pvc edge band tape .The front elevation of the table is made of white and blue laminate glass as per the drawing. Necessary grooves are to be provided. Exposed sides are finshed with blue &amp; white laminate .</p> <p>Drawers , keyboard tray are made of 17 mm thick exterior grade both side prelaminated MDF board, with exposed top edges lipped with 2mm thick PVC edgeband as per the drawing. .. Necessary fittings such as steel slides, lock(Godrej/equivalent) , handles etc. of approved make are to be provided. One Drawer set contains three numbers are to be provided. Foot rest are made of 17 mm thick exterior grade both side prelaminated MDF board with PVC edge band knock down type bottom bush etc.30cm wide and 15cm height at one end and the other end is zero 60cm length fixed on the bottom side of the table etc. complete. Provision for cable manager is to be provided.</p>	No			
16	12.00	<p><b>Table for CSO, CLERK, RMSC , RMME 150x80x75 cm</b></p> <p>The size of Table is 150x80x75cm. The table top and all the exposed faces are made of 17 mm thick exterior grade both side prelaminated MDF board lipped with 2 mm pvc edge band tape . The front elevation of the table is made of white and blue laminate as per the drawing. Necessary grooves are to be provided. Exposed sides are finshed with 1 mm thick blue &amp; white laminate .</p> <p>Drawers , keyboard tray are made of 17 mm thick exterior grade both side prelaminated MDF board, with exposed top edges lipped with 2mm thick PVC edgeband as per the drawing. .. Necessary fittings such as steel slides, lock(Godrej/equivalent) , handles etc. of approved make are to be provided. One Drawer set contains three numbers are to be provided. Foot rest are made of 17 mm thick exterior grade both side prelaminated MDF board with PVC edge band knock down type bottom bush etc.30cm wide and 15cm height at one end and the other end is zero 60cm length fixed on the bottom side of the table etc. complete. . Provision for cable manager is to be provided.</p>	No			



Sl. No.	Qty.	Description	Unit	Rate	Rate in words	Amount
17	1.00	<p><b>Net PC Table 120x60x75 cm</b></p> <p>The size of Table is 120x60x75cm. The table top and all the exposed faces are made of 17 mm thick exterior grade both side prelaminated MDF board lipped with 2 mm pvc edge band tape . Necessary grooves are to be provided. Exposed sides are finished with 1 mm thick blue &amp; white laminate .</p> <p>Drawers , keyboard tray are made of 17 mm thick exterior grade both side prelaminated MDF board, with exposed top edges lipped with 2mm thick PVC edgeband as per the drawing. . Necessary fittings such as steel slides, lock(Godrej/equivalent) , handles etc. of approved make are to be provided. Foot rest are made of 17 mm thick exterior grade both side prelaminated MDF board with PVC edge band knock down type bottom bush etc.30cm wide and 15cm height at one end and the other end is zero 60cm length fixed on the bottom side of the table etc. complete. Provision for cable manager is to be provided.</p>	No			
18	1.00	<p><b>Server room Table 150x75x75 cm</b></p> <p>The size of Table is 150x75x75cm. The table top and all the exposed faces are made of 17 mm thick exterior grade both side prelaminated MDF board lipped with 2 mm pvc edge band tape . Necessary grooves are to be provided. Exposed sides are finished with 1 mm thick blue laminate .</p> <p>Drawers , keyboard tray are made of 17 mm thick exterior grade both side prelaminated MDF board,, with exposed top edges lipped with 2mm thick PVC edgeband as per the drawing. .. Necessary fittings such as steel slides, lock(Godrej/equivalent) , handles etc. of approved make are to be provided. . Foot rest are made of 17 mm thick exterior grade both side prelaminated MDF board with PVC edge band knock down type bottom bush etc.30cm wide and 15cm height at one end and the other end is zero 60cm length fixed on the bottom side of the table etc. complete.. Provision for cable manager is to be provided.</p>	No			
19	9.00	<p><b>Side Tables for AGM, Asst ,Swo&amp; Cash 120x45x75cm</b></p> <p>The size of Side Table is 120x45x75 cm. The side table made of 17 mm thick exterior grade both side prelaminated MDF board lipped with 2 mm pvc edge band tape . 6mm thick white corian top is to be provided on table top and the edges to be rounded and polished .</p>				

		Description	Unit	Rate	Rate in words	Amount
		Providing sliding door with shutters using 17 mm thick exterior grade both side prelaminated MDF board by using Aluminium sliding channel, sliding cabinet shutter fittings (Ebco/Equivalent), lock and key, 5cm SS handle File rack should be provided with 17 mm thick exterior grade both side prelaminated MDF board lipped with 2 mm pvc edge band tape as per the drawing	No			
20	2.00	<b>Side Tables for CM &amp; Cash officer 120x45x75 cm</b>  The size of Side Table is 120x45x75 cm. The side table made of 17 mm thick exterior grade both side prelaminated MDF board lipped with 2 mm pvc edge band tape . Providing sliding door with shutters using 17 mm thick exterior grade both side prelaminated MDF board by using Aluminium sliding channel, sliding cabinet shutter fittings (Ebco/Equivalent), lock and key, 5cm SS handle File rack should be provided with 17 mm thick exterior grade both side prelaminated MDF board lipped with 2 mm pvc edge band tape as per the drawing	No			
21	12.00	<b>Side Tables 100x45x72.5 cm</b>  The size of Side Table is 100x45x75 cm. The side table made of 17 mm thick exterior grade both side prelaminated MDF board lipped with 2 mm pvc edge band tape . Providing sliding door with shutters using 17 mm thick exterior grade both side prelaminated MDF board by using Aluminium sliding channel, sliding cabinet shutter fittings (Ebco/Equivalent), lock and key, 5cm SS handle File rack should be provided with 17 mm thick exterior grade both side prelaminated MDF board lipped with 2 mm pvc edge band tape as per the drawing	No			
22	4.00	<b>Writing ledge</b>  Providing and fixing writing ledge of size 40x60x105 cm made with using 17 mm thick exterior grade both side prelaminated MDF board lipped with 2 mm pvc edge band tape fixed to column with suitable vertical and horizontal supports as per the drawing. 12 mm thick toughened glass with edge polish to be provided on top of the writing ledge. Skirting to be provided.	No			

Sl. No.	Qty.	Description	Unit	Rate	Rate in words	Amount
23a	22.00	<b>Rolling shutter</b> Supply and fixing Automatic Rolling shutter of approved make, made of 0.90mm thick cold rolled shutter laths,interlocked together at the ends by two ends locked,mounted on specially designed M.S.pipe shafts, connected with Automatic side motor of approved make ( lifting capacity of motor is 800 kg (550 watt) ) with push button switches and remote control system 14 G side guides,14 G bottom plate with 40 x 6mm M.S.flat for sliding locking arrangements. Shutter is made for Automatic. Applying one coat of iron primer and two coat synthetic enamel paint etc complete	M2			
23b	6.00	Supplying and fixing 1.25 mm thick cover for rolling shutter of approved make and painted with a priming coat of iron primer and two coat synthetic enamel paint etc complete	M			
24	75.00	<b>Glass panelling in lobby</b> The partitions are of single skin type. The partition should be firmly fixed on floor/ counter/ wall made out of aluminium section of 63.5x38.1x1.2 mm thick of INDAL/JINDAL as internal frame structure placed horizontally & vertically in 60x60 cm interval as shown in the drawing which is covered with 9 mm thick marine grade plywood(IS 303) Then fixing 6 mm thick lacquered blue colour glass (Planilaque Evolution) over the plywood partitions with necessary glass adhesive on the rear side of the glass and fixing in position as shown in the drawing.	M <sup>2</sup>			
25	50.00	<b>Texture Painting</b> Painting with synthetic plaster materials with special type of brush and stippled tool to form ruffles finish or equivalent approved texture finish after leveling the surface of walls, columns and partitions with two coats of putty . The textured surface is to be applied with two coats of textured interior emulsion paint using roller brush. Necessary scaffolding etc complete as per the specifications.	M <sup>2</sup>			
26	25.00	<b>Wall panelling for Display wall - Rear side of single window counter</b> The frame work of panelling should be of aluminum rectangular section 5x2.5 cm both horizontally and vertically at 60 cm c/c which is covered with 17mm thick exterior grade MDF board finshed with blue shade high gloss PU coating.	M <sup>2</sup>			
		<b>TOTAL (A)</b>				



- LEGEND**
- GLAZED PARTITIONS
  - SEMI PARTITIONS
  - CONCRETE (WALLS)
  - SOLID PARTITIONS
  - FIRE RATED CEMENT PARTITION

**PROPOSED BUILDING FOR  
STATE BANK OF INDIA,  
THRISSUR**

**GROUND FLOOR PLAN**

Drawn by	GINISH K.G
Architect	Prasen P S. Anil P, A. I. A. A. I. I. D
Chief Architect	

Sheet No.	01	Scale	DNB
Date	7.05.2018	NTS	
Prepared by	NTS	7.05.2018	
Checked by	NTS	7.05.2018	

**GROUND FLOOR PLAN**





<p align="center"><b>PROPOSED BUILDING FOR STATE BANK OF INDIA, THRASSUR</b></p>			
<p align="center"><b>LAYOUT WITH ITEM NO GROUND FLOOR</b></p>			
Drawn by	GMSH KG		
Architect	Parsons P 8 Aon Regl, MIA, MIID		
Chief Architect			
Sheet No. 01	S. Y. RAMAKRISHNAN 85, DEVA, FIE, C, Pm, M F.V, F.IIA, Regl, MIID		
Scale	NTS	Date	7-66-2016
Note: All dimensions are in meters.			





PROPOSED BUILDING FOR  
STATE BANK OF INDIA,  
THRISSUR

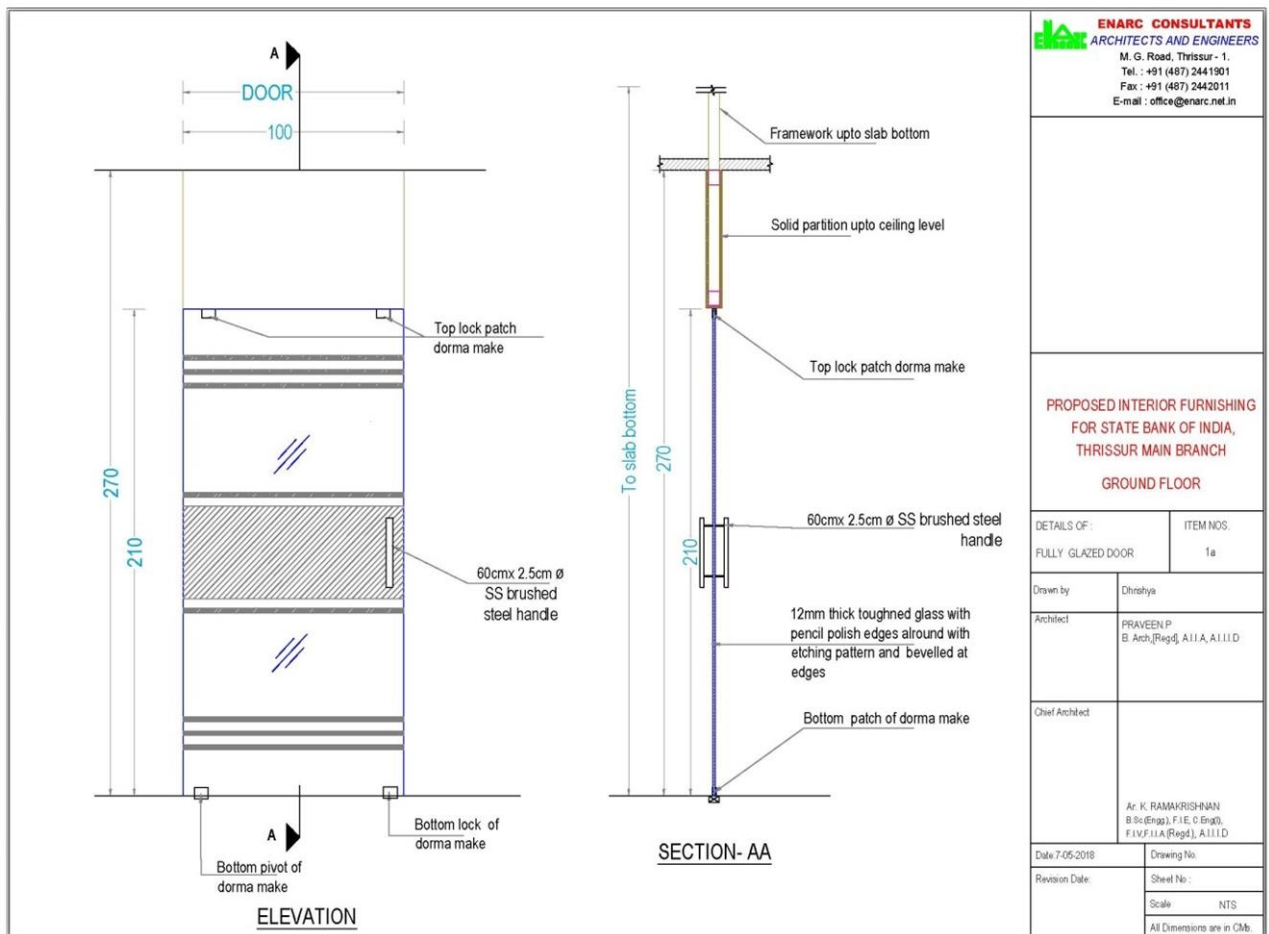
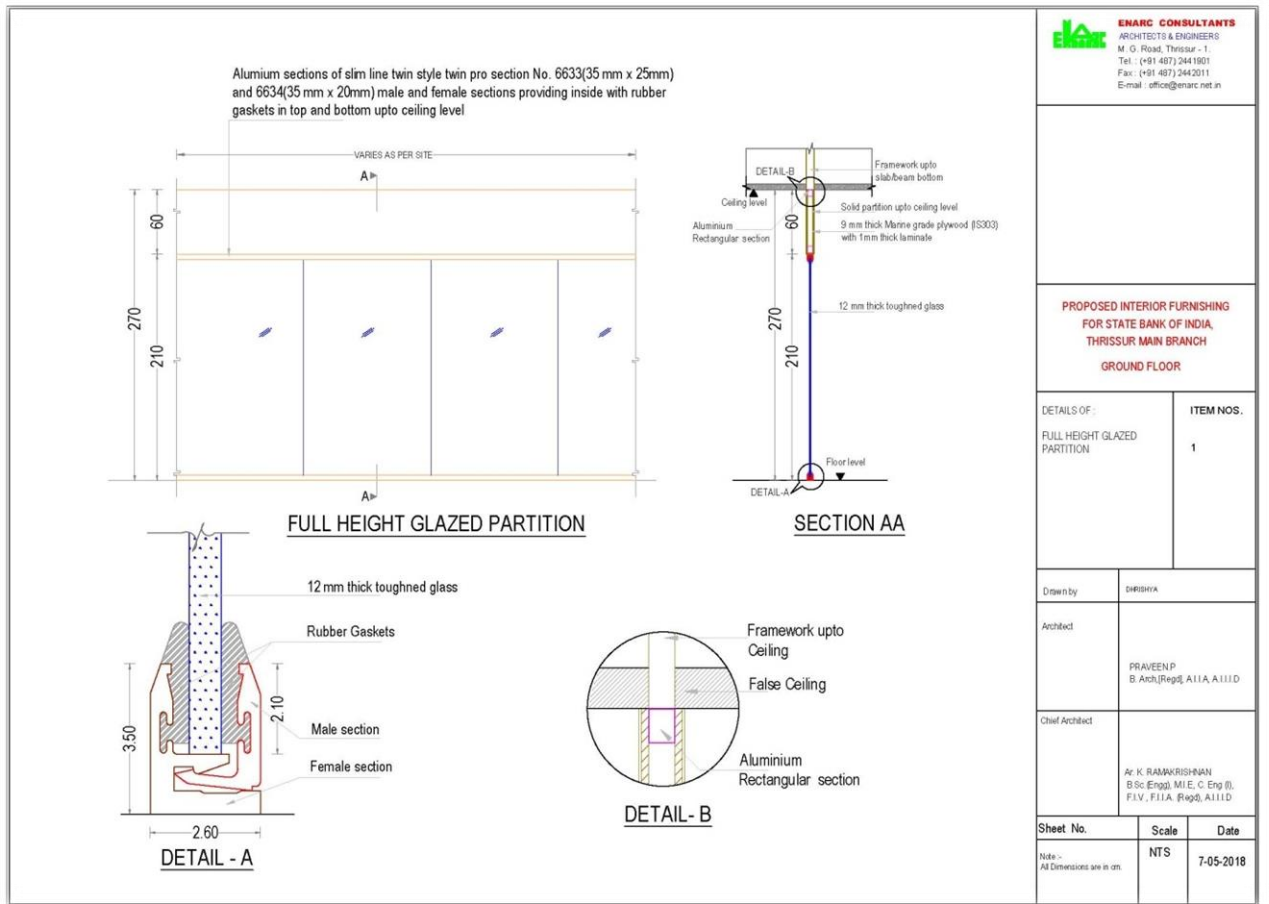
Drawn by	GIRISH K G
----------	------------

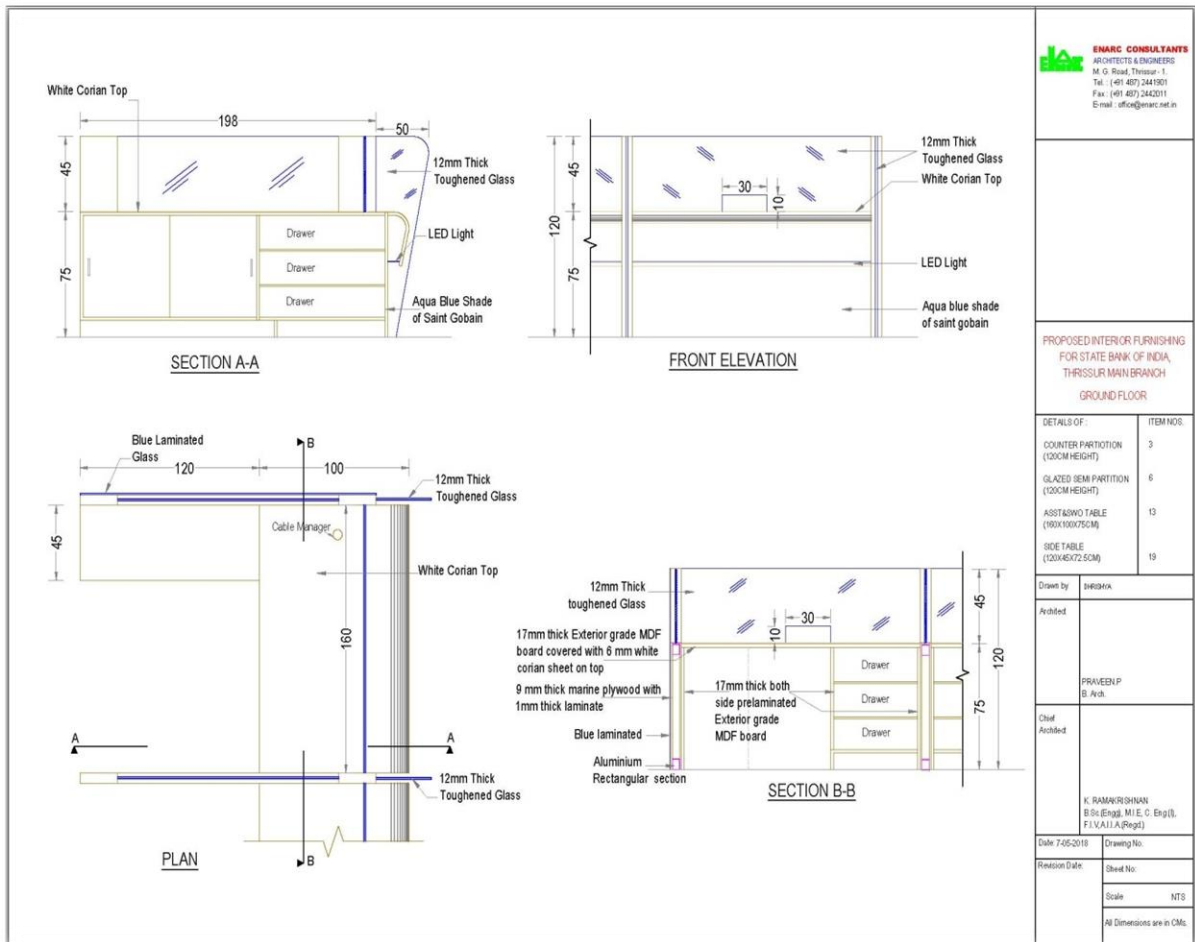
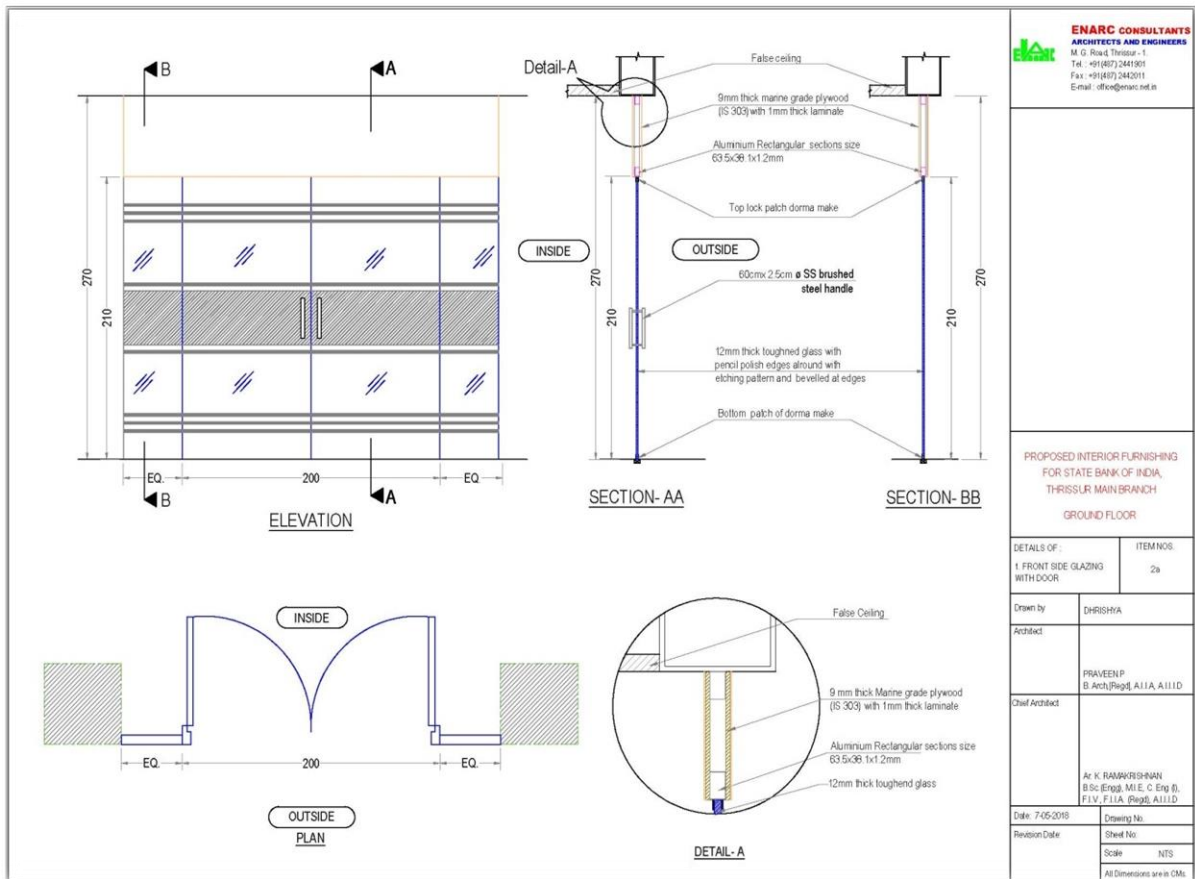
Chief Architect	B. Arch (Reg) AILA, AIIID
-----------------	---------------------------

Dr. K. RAMAKRISHNAN  
B.Sc. (Engg), F.I.E., C. Eng (I)  
FIV, F.I.A. (Regd), ALLIED

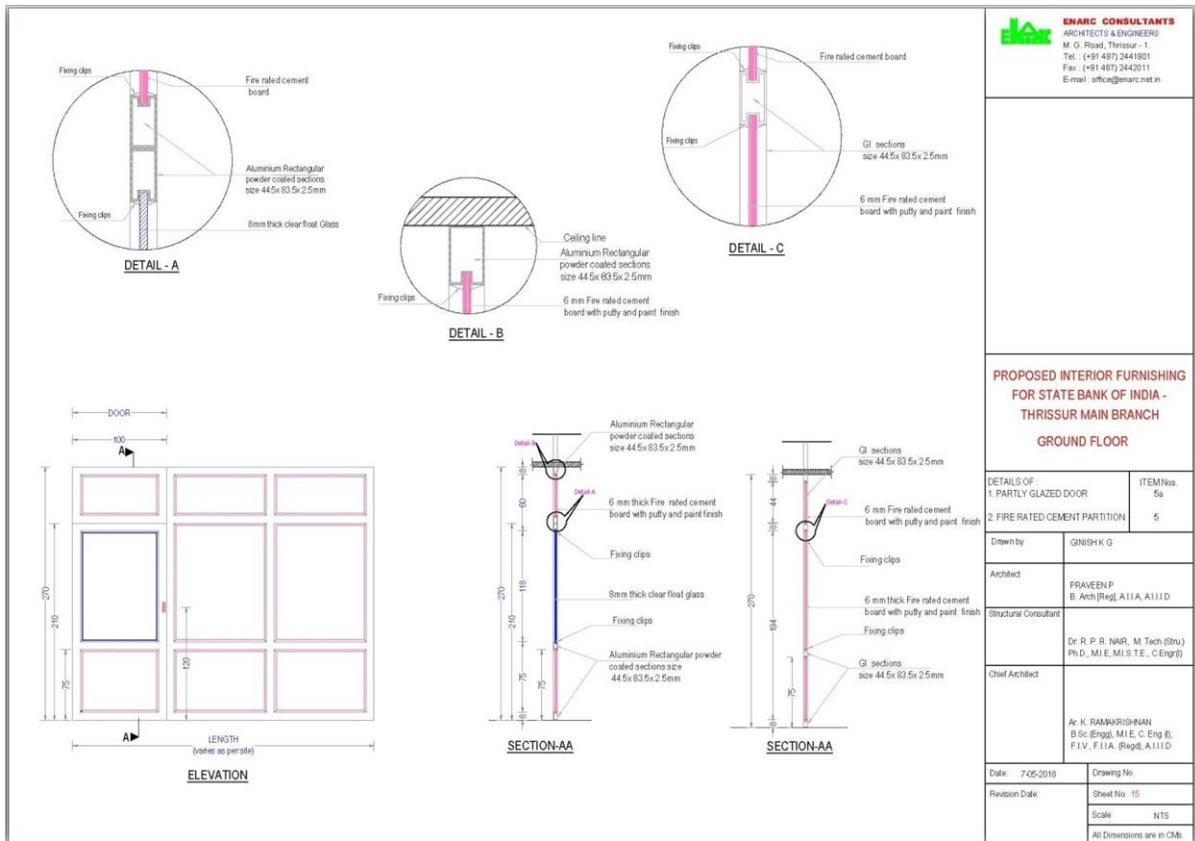
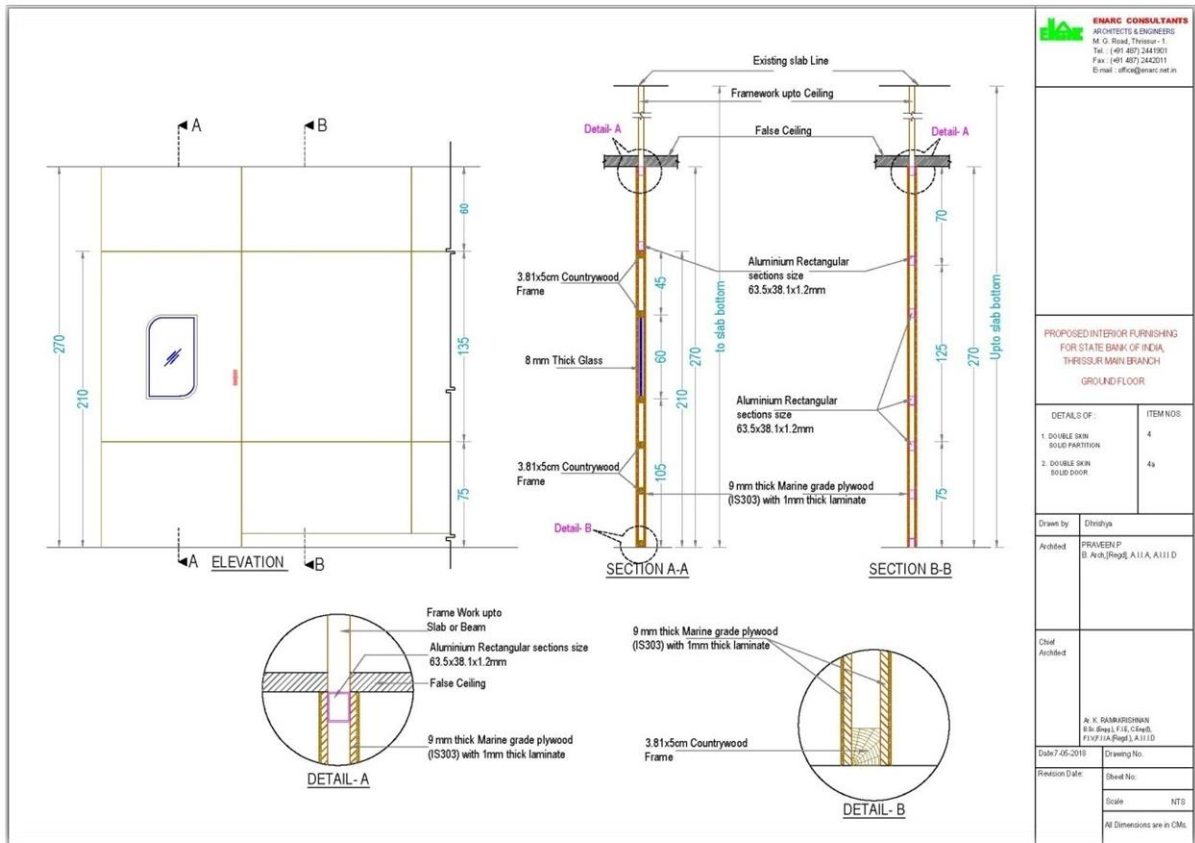
Sheet No. 01	Scale	Date
--------------	-------	------

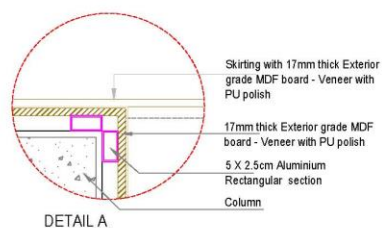
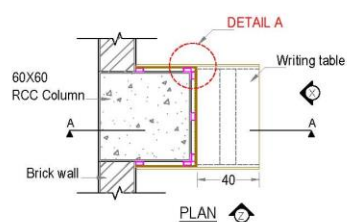
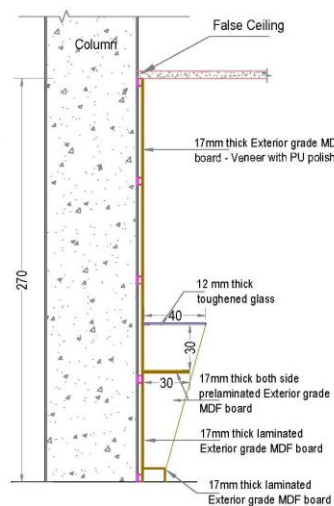
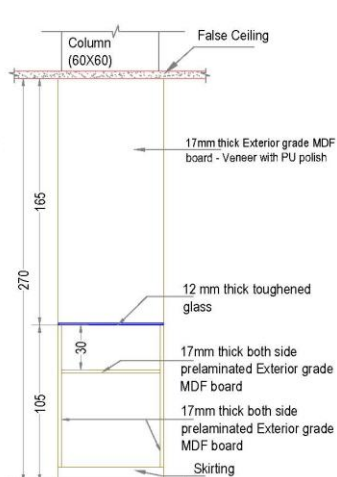
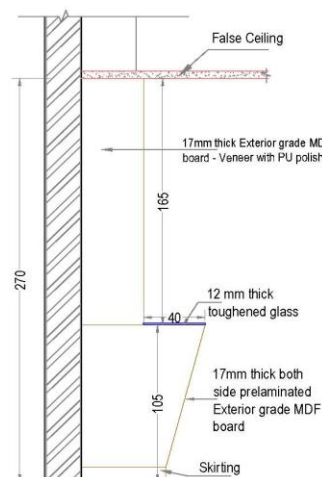
Notes	NIS	7-05-2018
<p>Notes &gt;</p> <p>of Emissions are in Millions.</p>		











**ENARC CONSULTANTS**  
ARCHITECTS & ENGINEERS  
M. G. Road, Thrissur - 1.  
Tel.: (+91 487) 2441001  
Fax: (+91 487) 2442011  
E-mail: office@enarc.net.in

PROPOSED INTERIOR FURNISHING  
FOR STATE BANK OF INDIA,  
THRISSUR MAIN BRANCH  
GROUND FLOOR

DETAILS OF :	ITEM NOS.
COLUMN PANELING	7
WRITING DESK (Ground Floor)	22

Drawn by	CHRSHTVA
----------	----------

Archited	
----------	--

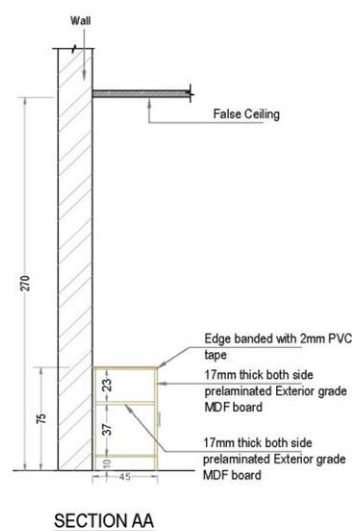
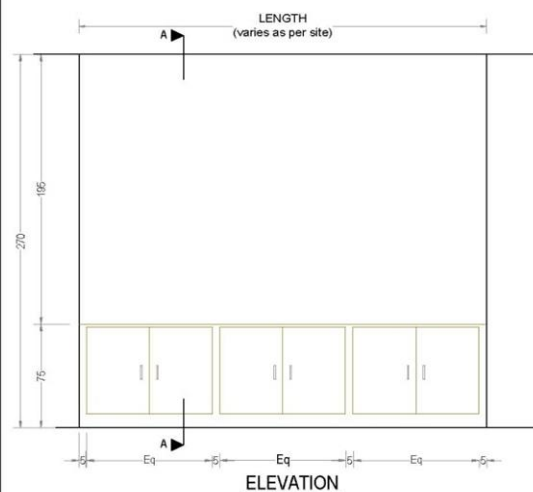
--	--

	PRAVEEN P. B. Arch.
Chief	

Accepted	
----------	--

K. RAMAKRISHNAN  
B.Sc (Engg), MIE, C. Eng (I),  
F.I.V.A.I.A.(Regd)

Date: 26-02-2018	Drawing No.
------------------	-------------



**ENARC CONSULTANTS**  
ARCHITECTS & ENGINEERS  
M. G. Road, Thrissur - 1.  
Tel.: (+91 487) 2441901  
Fax: (+91 487) 2442011  
E-mail: office@enarc.net.in

PROPOSED INTERIOR FURNISHING  
FOR STATE BANK OF INDIA,  
THRISSUR MAIN BRANCH  
GROUND FLOOR

DETAILS OF:	ITEM NOS.
CUPBOARD- LOW LEVEL (75 cm Height)	8a

Drawn by	DHRISHYA
----------	----------

Architect	
-----------	--

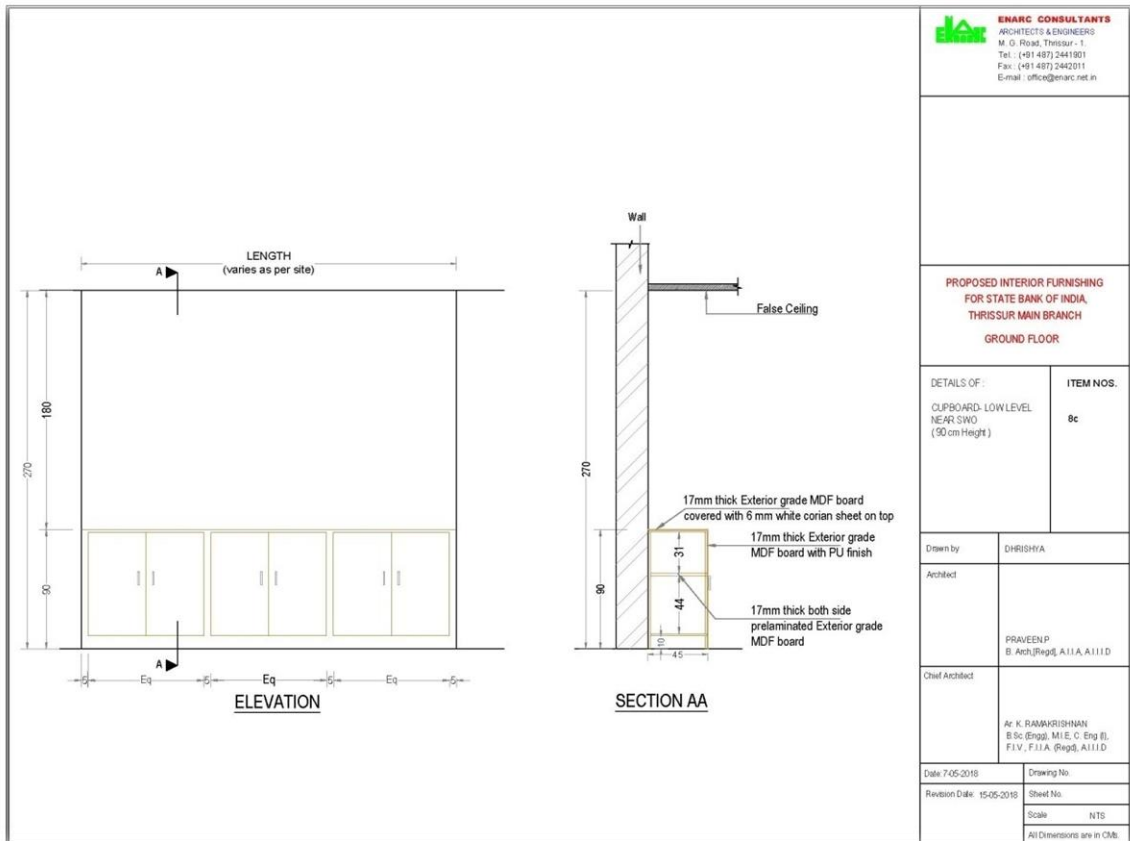
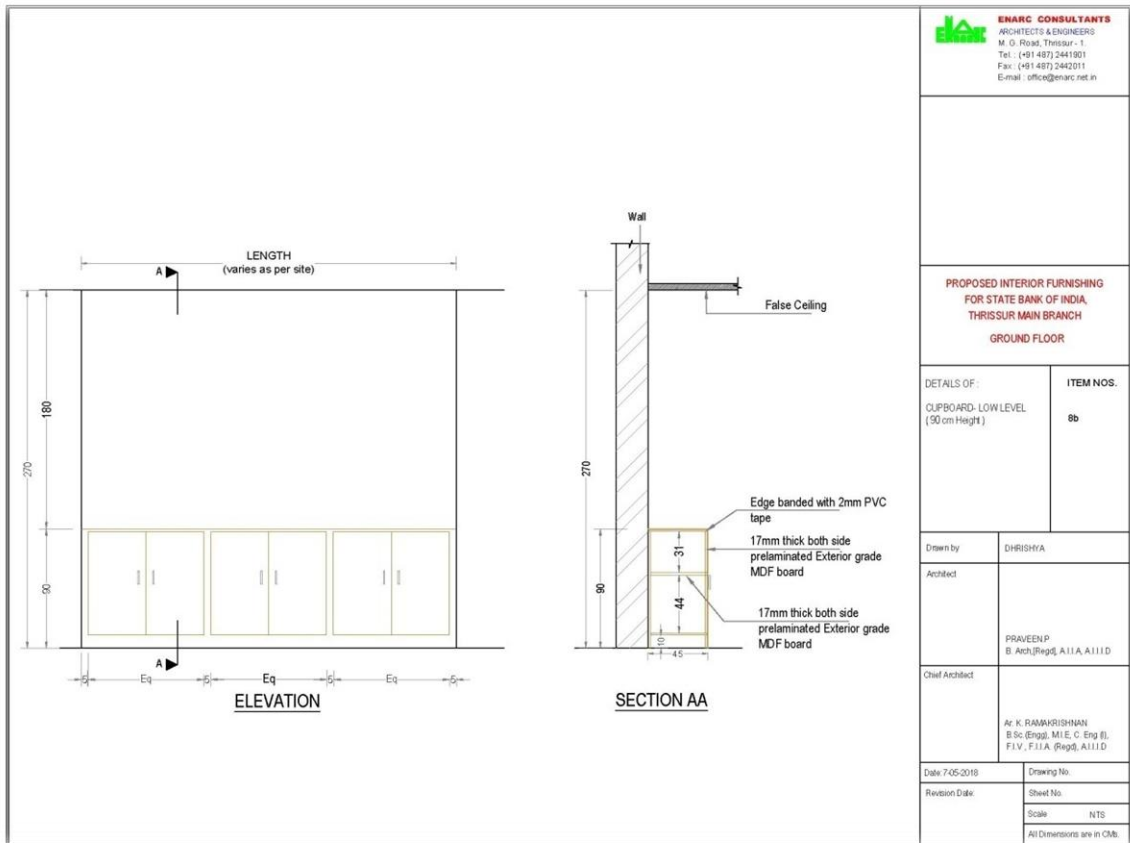
--	--

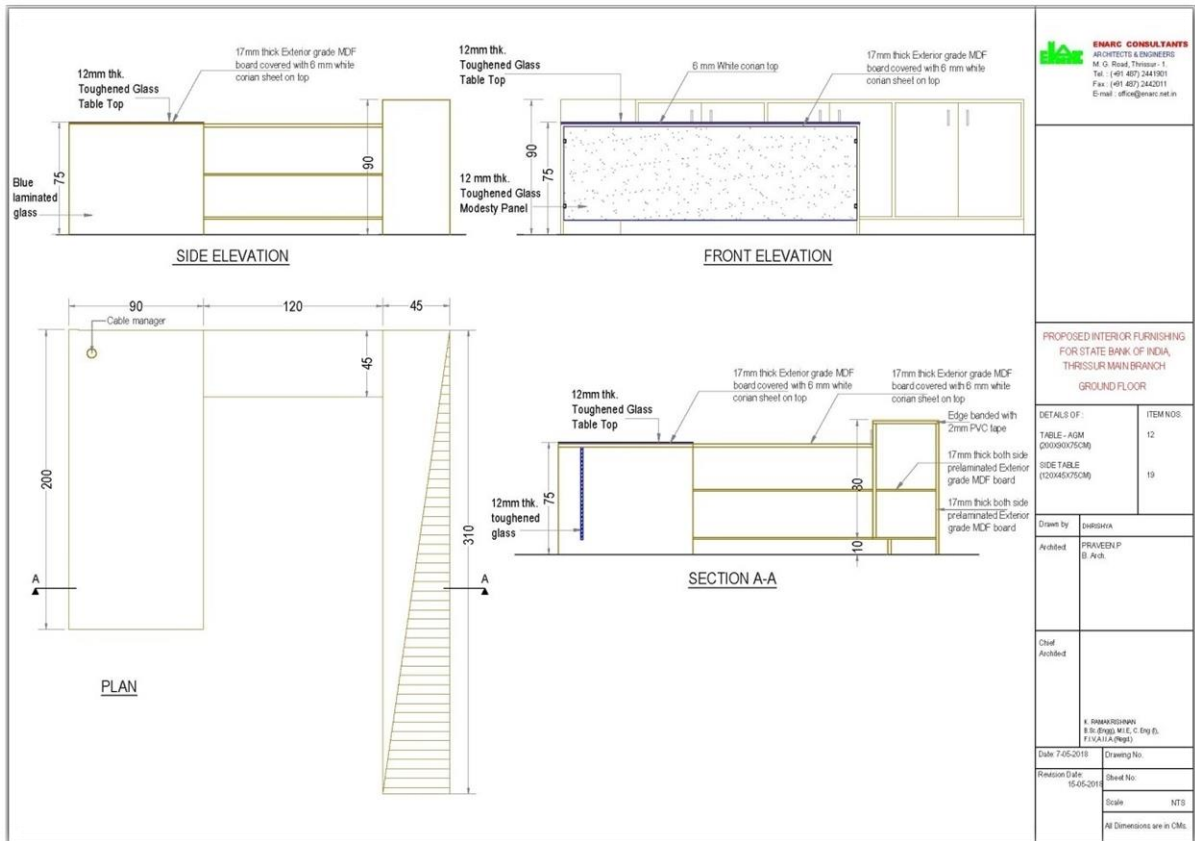
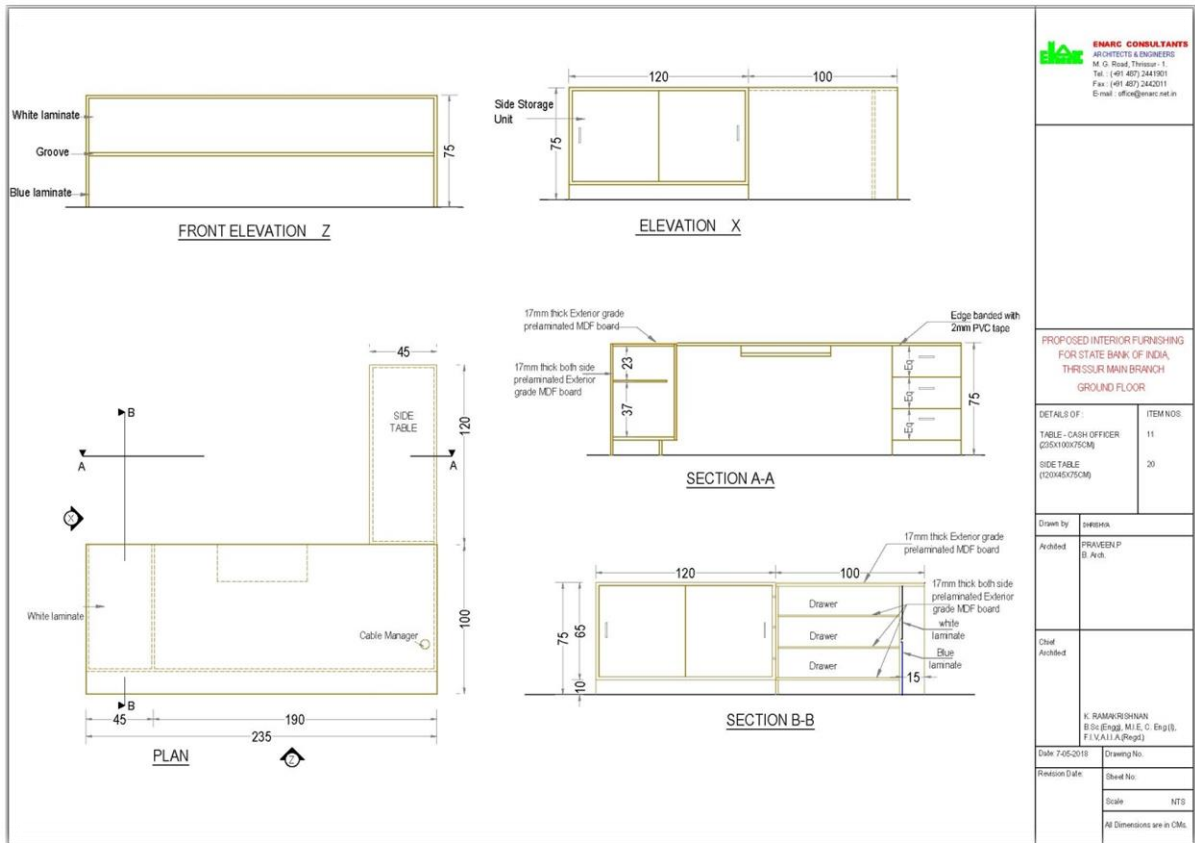
	PRAVEEN P B. Arch,[Regd], A.I.A, A.I.I.D
--	---

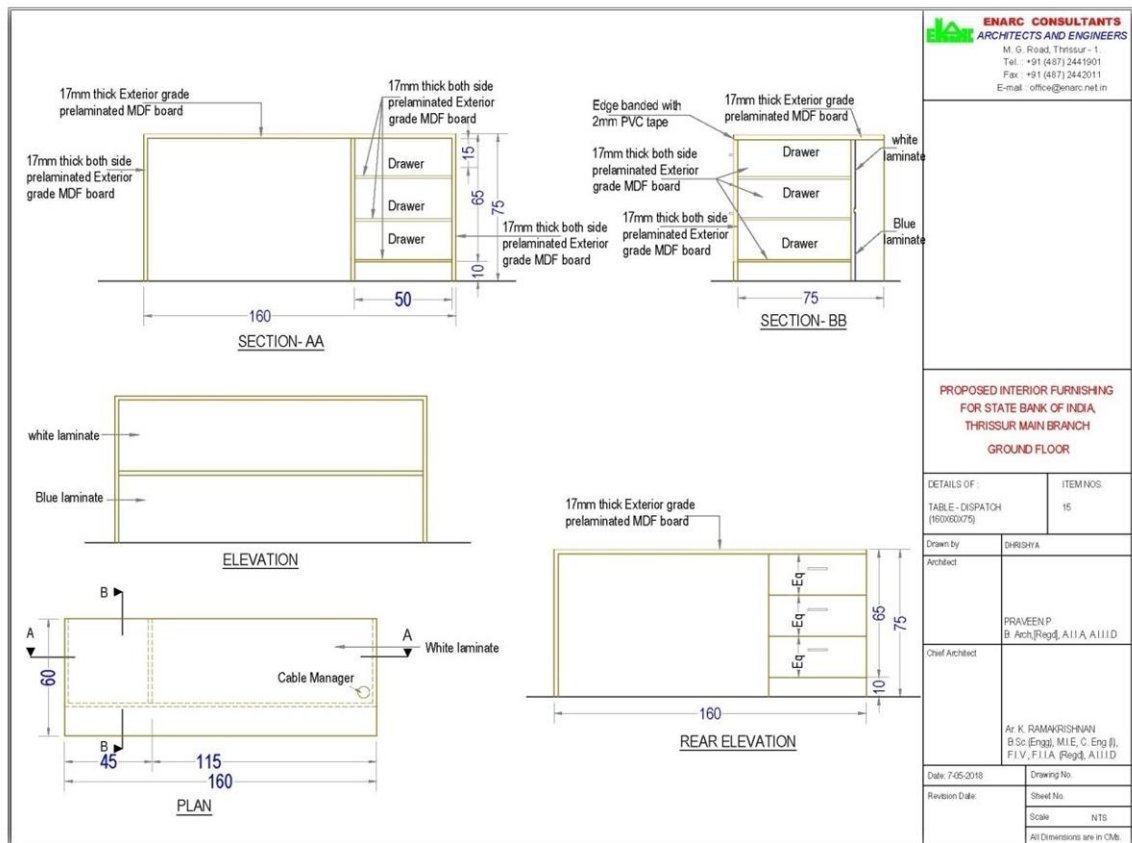
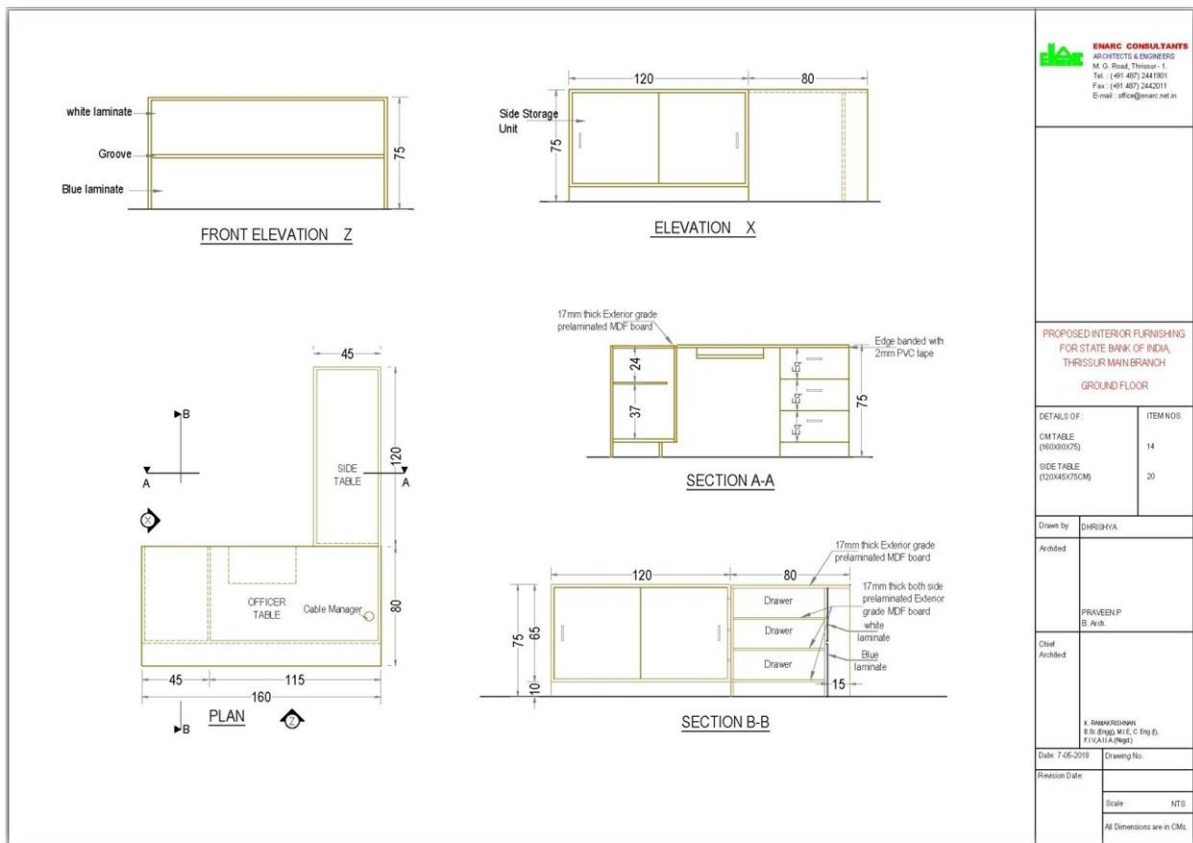
Chief Architect	
-----------------	--

Ar. K. RAMAKRISHNAN  
B.Sc.(Engg), M.I.E, C. Eng (I),  
F.I.V, F.I.I.A (Regd), A.I.I.D

Date: 7-05-2018	Drawing No.
-----------------	-------------







FRONT ELEVATION    Z

ELEVATION X

PLAN

SECTION A-A

SECTION B-B

PROPOSED INTERIOR FURNISHING  
FOR STATE BANK OF INDIA,  
THRISSUR MAIN BRANCH  
GROUND FLOOR

DETAILS OF:	ITEM NOS.
OFFICER TABLE (150X80X75)	16
SIDE TABLE (90X45X75CM)	21

Drawn by	CHROSHYA
----------	----------

Archived	
----------	--

[illegible]

--	--	--	--	--	--	--

PRAVEEN P

Chief	
-------	--

Archived

--	--	--	--

[illegible]

B.Sc. (Engg.)

Date: 7-05-2018	Drawing
-----------------	---------

Revision Date:	Sheet:
----------------	--------

	Scale
--	-------

	At Dis
--	--------

SECTION- AA

SECTION- BB

### PLAN

REAR ELEVATION

PROPOSED INTERIOR FURNISHING  
FOR STATE BANK OF INDIA,  
THRISSUR MAIN BRANCH  
GROUND FLOOR

DETAILS OF :	ITEM NOS.
INTERNET PC TABLE (120X60X75)	17

Drawn by	DHRISHYA
----------	----------

Architect	
-----------	--

[illegible]

DOALFEND

B. Arch. [Regd], A.I.A. A

Chief Architect	
-----------------	--

[illegible][illegible]

A. V. GARMIDORIAN

B.Sc. (Engg), M.I.E., C.E.

	FLV, FLIA (Regd. A)
Date: 3.06.2019	Drawing No.

Revision Date:	Sheet No.
----------------	-----------

Scale	N
-------	---

All Dimensions are



