

<b>TENDER FOR ELECTRICAL INSTALLATION WORKS OF STATE BANK OF INDIA, SBI BO- GONIANA</b>					
SN.	DESCRIPTION OF ITEM	QTY.	UNIT	RATE	AMOUNT
<b>PART- A</b>					
<b>UPS &amp; RAW POWER POINTS</b>					
1	Supply all materials receiving, storing, handling, fixing & laying of 3 x 2.5 Sq.mm. PVC insulated copper conductor armoured cable and fixing of cable on wall with suitable size of clamps / saddles or laid in floor or recess wall including cutting of floor / wall for computer points with suitable size GI box with modular plate and cover in front including providing and fixing 3 No. 5 amp 3 pin <b>modular</b> socket controlled by 1 No. 5 amp <b>modular</b> switch with indicator , connection end terminations with suitable size of glands etc. complete as reqd.(On UPS Power)	27	Each		
1 (A)	As per item 1 above but with 2 no. 15 amp 5 pin modular socket controlled by 1 no. 15 amp modular switch.(For E-lobby UPS and data points are to be provided in lock and key arrangement)	5	Each		
2	As per item 1 above but with 1 no. 15 amp 5 pin modular socket controlled by 1 no. 15 amp <b>modular</b> switch with indicator.(On Raw power for general supply and for printer )	10	each		
<b>DISTRIBUTION BOXES</b>					
3	supply, installation, testing and commissioning of factory fabricated distribution board rust inhibited, powder coated sheet fabricated comprising of incoming isolator and outgoing MCB's neutral link or neutral bus, top and bottom detachable entry earthing bolts interconnection and grouting bolts etc complete as reqd. as per details below :-				
(a)	8 way MCBDB double door in recessed wall including cutting of wall and making good the damages comprising of 1no. 63 Amp isolator and 6 no. 6/10 Amp MCBs etc. complete as reqd.( <b>For UPS Supply to computers</b> )	1	no.		
(b)	6 way MCBDB double door comprising of 1 no. 40 amp DP isolator and 4 no. 6/10amp MCBs etc. complete as reqd. ( <b>For ATM UPS Supply</b> )	1	no.		
(c)	4 way TPN MCBDB DOUBLE DOOR comprising of 1 no. 100 amp isolator and 6 no. 32 amp DP MCBs etc. complete as reqd. (For Ac Circuit on Raw Supply) For Power Point	2	no.		
(d)	4 way TPN MCBDB DOUBLE DOOR comprising of 1 no. 100 amp isolator and 12 no. 6-32 amp SP MCBs etc. complete as reqd. (for lighting ckt)	1	no.		
(e)	12 way MCBDB double door in recessed wall including cutting of wall and making good the damages comprising of 1no. 63 Amp isolator and 10 no. 6/10 Amp MCBs etc. complete as reqd.( <b>For UPS Supply to computers</b> )	1	no.		
<b>CONTROL AND DISTRIBUTION PANELS</b>					
4	Providing and fixing 3 no. 200Amp kitkats (fuse carrier & base) with 1 no. neutral link on suitable size of Bakelite sheet of thickness not less than 6mm etc. complete as reqd.	1	no.		
<b>PANELS</b>					

<b>5</b>	Supply, installation, testing & commissioning of wall mounted cubical type electrical panel fabricated with 16 S.W.G. MS sheet. The panel shall be free standing type totally enclosed dust & vermin proof construction with rubber gaskets. The floor mounting panel shall have ISMC mounting channels, GI earth buss bar, bus bar chamber cable alleys interconnections with solid bar/PVC insulated copper conductor as per requirement, and suitable supports of bus bars. the panel shall be painted with 2 coats of enamel paint( gray shade ) over the primer and shall have be provided with designation of incoming and outgoing feeder as per details below:-				
<b>A</b>	Main Panel	1	set		
	<b>INCOMING</b>				
<b>(a)</b>	1 no MCCB breaking capacity 36 KA 200 amp 4P, DN SERIES				
<b>(b)</b>	1 set of 250 amp 4 strips aluminium bus bar chamber in separate compartment				
<b>(c)</b>	1no. 0-500V Digital multimeter in a separate compartment & Digital Ammeter and one set of CTs (3no.) with CT ratio 200/5 A with LED type indication lamps with protection fuses in separate compartment				
	<b>OUTGOING</b>				
<b>(a)</b>	1 no MCCB breaking capacity 25 KA 160 amp 3P with suitable neutral link, DN SERIES				
<b>(b)</b>	3 no MCCB breaking capacity 25 KA 63 amp 3P with suitable neutral link, DN SERIES (For AC DB & Spare)				
<b>B</b>	Generator Panel	1	set		
	<b>INCOMING</b>				
<b>(a)</b>	1 no MCCB breaking capacity 36 KA 160 amp 4P, DN SERIES				
<b>(b)</b>	1 set of 200 amp 4 strips aluminium bus bar chamber in separate compartment				
<b>(c)</b>	1no. 0-500V Digital multimeter in a separate compartment & Digital Ammeter and one set of CTs (3no.) with CT ratio 150/5 A with LED type indication lamps with protection fuses in separate compartment				
	<b>OUTGOING</b>				
<b>(a)</b>	5 no MCCB breaking capacity 25 KA 63 amp 3P with suitable neutral link, DN SERIES (For Light DB, UPS Panel supply, AC DB, E lobby, Spare)				
<b>6</b>	Supply, installation, testing & commissioning of PVC insulated PVC sheathed Un armored cable of 1100 V (IS-1554 part 1) and fixing of cable on wall with suitable size of clamps/saddles or laid in floor /recess wall including cutting of floor/wall and making good the damages etc. complete as reqd. of following sizes:-				
<b>a)</b>	3.5 core x 50 sq.mm. Aluminium conductor with 2 no. 8 S.W.G. GI wire ( ( Distribution From Main Switch and From Main panel to Changeover and Changeover to Generator panel and Generator to changeover) )	50	per mtr.		
<b>b)</b>	3.5 core x 25 sq.mm. Aluminium conductor with 2 no. 8 S.W.G. GI wire (From panel to AC DB, UPS panel)	75	per mtr.		
<b>c)</b>	4 core x 16 sq.mm. Aluminium conductor with 2 no. 8 S.W.G. GI wire (for light DB)	25	per mtr.		
<b>d)</b>	3 core x 6 sq.mm. copper conductor (from UPS room to UPS DB & main panel to e-lobby room)	55	per mtr.		

Ref No. DIC/SBI/2k20/Goniana/Tender /022

e)	3 x 2.5 sq.mm. copper conductor ( for AC distribution)	140	per mtr.		
7	End termination with brass compression glands including providing lugs/ferrules and making necessary connection etc. complete as reqd. following sizes:				
a)	3.5x50 sq.mm. Aluminium conductor	4	each		
b)	3.5x25 sq.mm. Aluminium conductor	8	each		
c)	4x16 sq.mm. Aluminium conductor	4	each		
d)	3x6 sq.mm. Aluminium/copper conductor	6	each		
e)	3x2.5 sq.mm. copper conductor	18	each		
8	Providing and fixing <b>200A, 4P ON LOAD Change Over Switch</b> with suitable size of angle iron frame suitable for installation on wall/floor including grouting of frame & painting etc. complete as required	1	job		
	<b>UPS DISTRIBUTION BOARD</b>				
9	Providing and fixing 16 S.W.G. MS sheet adapter box, and also base frame for installation of MCB DBs plug and socket arrangement and to cover cables in system room including painting etc. complete	1	sq. mtr.		
10	supply, installation, testing and commissioning of factory fabricated distribution board rust inhibited, powder coated sheet fabricated comprising of incoming and outgoing isolator and MCB's neutral link or neutral bus, top and bottom detachable entry earthing bolts interconnection and grouting bolts etc complete as reqd. as per details below :-				
	(a) 4 way SPN DB comprising of 1 no. 63 amp TP MCB ( for UPS input)	1	each		
	(b) 4 way SPN DB comprising of 2 no. 63 amp DPMCB (UPS out put)	3	each		
11	supply fixing, testing of following 3 pin metal clad industrial type plug & socket arrangement with plug top cap & chain controlled by 1 No. MCB				
	(a) 20/25 amp with 20/25 amp SPMCB( For Acs and UPS)	6	no.		
	(b) 30 amp with 32 amp SPMCB ( For UPS )	3	no.		
	(c) 30 amp with 32 amp DPMCB ( For AC )	6	no.		
12	providing and laying following sizes of PVC insulated copper conductor cable of 1100V in flexible/PVC conduit with accessories such as glands, bends etc. (as per requirement) including making necessary inter connection etc complete as reqd. 2X6 sq.mm with 1 suitable PVC insulated earth wire	30	per mtr.		
13	providing and fixing suitable size of MS box fabricated with 16 S.W.G. MS sheet either in recess wall or on surface to accommodate dedicated earth from earth electrode and further distribution of earth to computer points including providing 5mm Bakelite sheet on base connector strip and painting of box etc complete as reqd	1	job		
	<b>EARTHING</b>				
14	(a) supply and fix copper plate earth station with 600x600x3 mm thick copper plate including all accessories such as watering pipe and funnel and providing masonry enclosure at top with cover plate i/c excavation of pit, supplying and filling of salt charcoal, refilling of pit etc complete as reqd as per IS-3043-1987. The voltage between neutral & earth must be below 1 volt.	1	set		

	(b) supply and fix G.I. plate earth station with 600x600x6 mm thick G.I. plate including all accessories such as watering pipe and funnel and providing masonry enclosure at top with cover plate i/c excavation of pit, supplying and filling of salt charcoal, refilling of pit etc complete as reqd as per IS-3043-1987.	2	set		
15	c) Supplying, fixing & termination of 20x3mm copper strip with earth station below ground level etc complete as reqd.	5.00	mtr.		
	d) Supplying, fixing & termination of 32x6mm G.I. strip with earth station below ground level and on wall saddle etc complete as reqd.	10.00	mtr.		
16	Providing and fixing of 8 SWG copper earth wire in the recess for loop earthing etc. as required.	60	mtr		
	Providing and fixing of 8 SWG GI earth wire in the recess for loop earthing etc. as required.	60	mtr		
17	Supply & laying 2mm thick 25 mm dia ISI mark PVC conduit pipe complete with accessories such as bends, junction boxes etc under floor or in recessed walls from copper earth electrode to UPS room for computer dedicated earthing, from GI earth electrode to main panel & UPS panel etc. wherever reqd. <b>Note:</b> flexible pipe not to be used any where.	120	mtr		
	<b>COMMUNICATION</b>				
18	Networking for computer networking starting from mounting rack with UTP CAT-6 cable in 2mm thick 25 mm dia ISI mark PVC conduit with accessories such as bends, junction boxes including providing and fixing I/O plates and SMB complete with all networking accessories etc complete as reqd. <b>Note:</b> flexible pipe not to be used any where.	22	no.		
19	Supply, installation, testing and commissioning of 24-port Patch Panel	1	no.		
20	Supply, installation, testing and commissioning of mounted rack 15" height made of powder coated MS sheet	1	no.		
21	supply, installation, testing and commissioning of <b>factory made</b> patch cable CAT-6 complete with 2 no. connectors etc. complete as reqd.				
	(a) 1 mtr. long	22	no.		
	(b) 2 mtr. long	12	no.		
	(c) Data cable CAT-6 with connector	50	mtr		
22	wiring for telephone points with 0.6 mm dia 2 pair insulated annealed tinned electrolytic copper conductor in 2mm thick 25mm dia ISI marked PVC conduit complete with accessories such as bends, junction boxes etc. with suitable size of G.I. box modular plate and cover in front on surface or in recess including providing and fixing modular type telephone socket outlet and making necessary connections etc. complete as reqd. <b>Note:</b> flexible pipe not to be used any where.	11	no.		
23	Supply & fixing of 30 pair FRP/PVC/Metal junction box with KRONE disconnection module necessary tag for identification	1	no.		
24	supply, installation, testing and commissioning of 30 pair telephone unarmoured cable as required. (Make-finolox/delton/polycab)	30	mtr.		

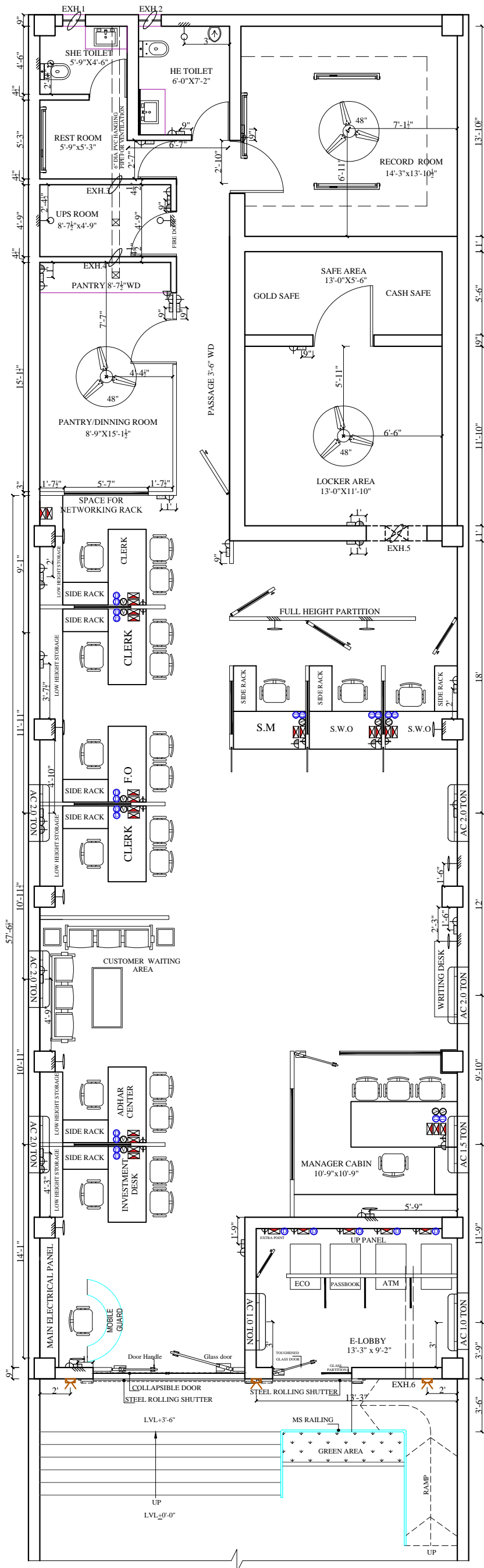
25	Automatic Programmable Time Switch 24 Hour for Glow sign board and AC in ATM (Make: L&T or equivalent to Legrand/Havells/Seimens)	1	no.		
26	Supply Installation, testing & commissioning of LED STRIP light with driver and Accessories complete as required ( MS CROMPTON or equivalent of WIPRO , PHILLIPS, BAJAJ etc.				
a)	Blue Colour Cat No.LST 20 BL(M/s Crompton)	6	mtr		
b)	Warm white Cat No. 38389 (M/S Philips)	45	mtr		
27	Wiring for light point/ fan point/ exhaust fan point/ call bell point with 1.5 sq.mm FRLS PVC insulated copper conductor single core cable in surface / recessed medium class PVC conduit, with modular switch, modular socket, modular plate, suitable GI box and earthing the point with 1.5 sq.mm. FRLS PVC insulated copper conductor single core cable etc as required.				
(a)	One light point controlled by one switch	25	no.		
(b)	Two light point controlled by one switch	35	no.		
(c)	One plug point	10	no.		
(d)	one switch controlled by one socket (independent for wall fan)	18	no.		
28	Wiring circuit/submain wiring along with earth wire with the following size of PVC single core FRLS copper conductor wire in 2mm thickness PVC pipe as required: 2x2.5 sq mm + 1x1.5 sq mm earth wire	250	mtr		
29	Supply, installation, testing and commissioning of refrigeration pipe including cutting of wall and fixing with suitable saddles or clamps, providing suitable size of sleeves for passing refrigerant pipe from indoor to outdoor unit including making necessary arrangement etc. complete as required.				
	a) For High Wall A.C. (1.0 & 1.5 Tr) Copper pipe size (1/2" & 1/4")	35	mtr		
	b) HWS/Cassette A.C. (2.0 Tr & 3.0Tr) Copper pipe size (5/8" & 3/8")	120	mtr		
30	Supply & fixing of 25 mm dia hard pipe for drain complete with all accessories such as tee, bend cutting chases making good the damages and leak proof joints to avoid seepage in wall/floor etc. complete as required.	80	mtr		
31	Cutting of floor/wall for laying of refrigerant/drain pipe including making good the damages etc. complete as required (excluding the area having ceramic floor tiles, where the chased floor will be got repaired by the firm executing the A.C. work, however, ceramic tiles will be got fixed by the Bank.	80	mtr		
33	Supply and laying of 3 core 2.5 sq mm FRLS copper flexible cable (for HWS AC) Make: Finolex / Polycab / Havells / Pyemen / Ecko	180	mtr		
<b>TOTAL</b>					
<b>PART- B</b>					
<b>SN.</b>	<b>DESCRIPTION OF ITEM</b>		<b>UNIT</b>		
<b>SUPPLY OF FIXTURES</b>					
1	SITC of 36 watt recess mounted <b>LED Light panel</b> suitable for 2' x 2' modular/gypsum ceiling with assembly complete with including making necessary frames & connections etc. Complete as reqd. ( M/s Crompton Cat No. LCTRLN-36-FO-CDL or equivalent of Philips/Wipro/ Bajaj)	32	no.		

Ref No. DIC/SBI/2k20/Goniana/Tender /022

2	SITC of 15 watt recess mounted <b>LED down lighter</b> with assembly complete with including making necessary connections etc. Complete as reqd. ( M/s Crompton Cat No. LCDE-15-CDL or equivalent of Philips/Wipro/ Bajaj)	50	no.		
3	SITC of <b>400 mm sweep wall fan</b> etc complete as reqd. (M/s crompton high flow or equivalent of Khaitan/Bajaj)	12	no.		
4	Supply and fixing of LED type fitting <b>20 watt, 4 feet</b> (M/s Phillips or equivalent of Wipro/ bajaj)	4	no.		
5	Supply and fixing of <b>15W Philips LED BULB</b> with suitable batten holder (Toilets, Pantry & UPS Room)	4	no.		
6	Supply and installation of 12" <b>size medium duty exhaust fan</b> . (Make: Crompton High Flo or equivalent of Khaitan / Bajaj (Necessary framing, wall cutting & finishing to be done by Contractor)	4	no.		
7	SITC of 30 watt Street light /Flood light for lighting the front side of the branch(M/s Crompton Cat No. LSTS-30-CDL or equivalent of Philips/Wipro.	2	Each		
8	Supply,installation, <b>48"</b> Ceiling fan with regulator,hanging hook etc complete as reqd. ( M/s crompton or equivalent of Usha/Bajaj)	2	nos		
10	Less buy-back of old material e.g. Old DB, wires, cables, light fixtures, etc in consultation with Branch Manager.	-1	Each		
	<b>Total - Part B</b>				
	<b>TOTAL PART-A</b>				
	<b>TOTAL PART-B</b>				
<b>i</b>	<b>SUB TOTAL</b>				

**Note:** (i) UPS point & networking point for e - lobby is to be provided in locking arrangement.  
(ii) Only two computer points are to be provided on one circuit. Independent circuit for Raw power plug and A.C point is to be provided starting from MCB distribution system.

Signature and seal of Contractor's



ELECTRICAL WORK		
SYMBOL	ITEM NAME	MOUNTED H.T FROM F.F.L
⊞	SWITCH BOARD	3'-6"
⊞	CEILING FAN	----
—	4 FEET TUBE LIGHT	9'-0"
⊞	16 AMP SOCKET FOR WORKSTATION	----
⊞	WALL MOUNTED FAN / CABIN FAN	AS PER SITE Condition
⊞	1x36 E LED CEILING LIGHT FITTING RECESS/ SURFACE MOUNTED	----
⊞	6/16 AMP SOCKET	----
⊞	3X6A SOCKET AND 16A SWITCH WITH INDICATOR	4'-0"
⊞	EXHAUST FAN	8'-0"
AC UNIT AND SOCKET		
⊞	20A SINGLE POLE A/C SWITCH	----
⊞	A/C SOCKET	----
⊞	1.5 TR HIGH WALL SPLIT A/C UNIT	----
DATA AND VOICE SOCKET		
⊞	DATA SOCKET	----
⊞	VOICE SOCKET	----

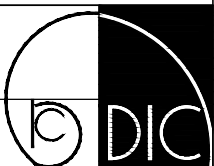
**PROJECT:-**  
**PROPOSED LAYOUT PLAN OF**  
**STATE BANK OF INDIA AT**  
**GONIANA**

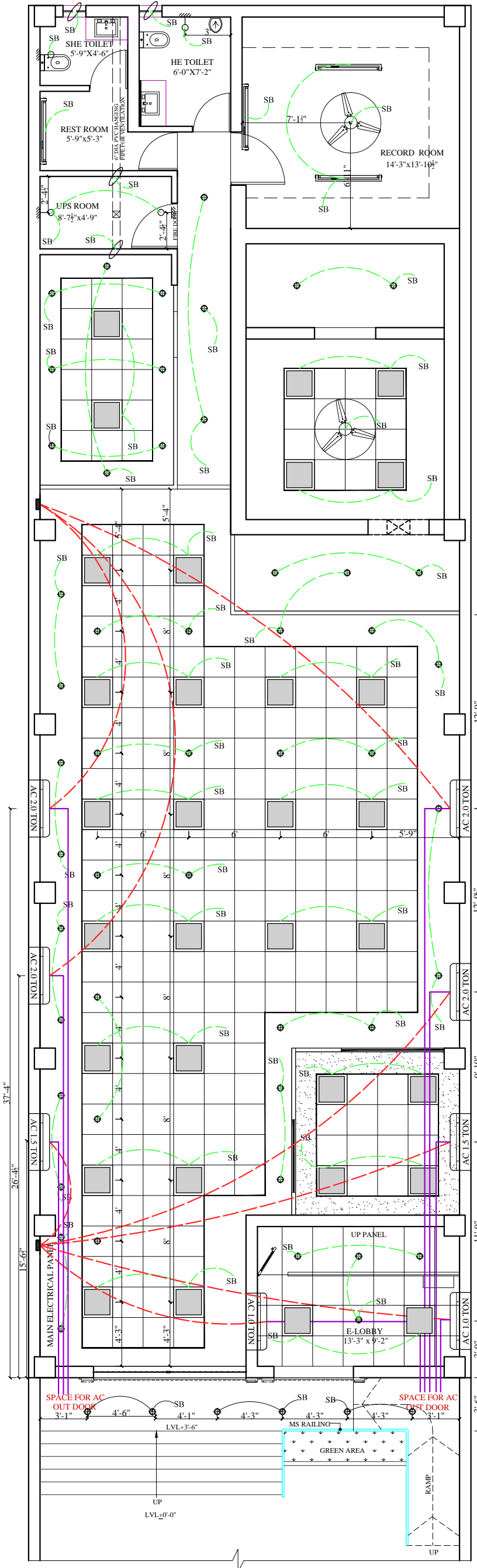
**TITLE:-**  
**GROUND FLOOR**  
**FURNITURE LAYOUT PLAN**

**DATE :-** 18.08.2020  
**SCALE:** N.T.S  
**DWG No.** DIC/2K21/GON/12

**SIGNATURE AND SEAL**  
**FOR ARCHITECT**

**design innovations**  
 ARCHITECTS, INTERIOR DESIGNERS, PLANNERS  
 #445, URBAN ESTATE, PHASE II PART II, BATHINDA  
 PH: 0164-2212131 (O) 98154-81651 (M)





1.		2X36 W LED LIGHT FITTING (2' X 2') RECESS SURFACE MOUNTED
2.		1x36 E LED CEILING LIGHT FITTING RECESS/SURFACE MOUNTED
3.		GRID CEILING OF 9'-6" HEIGHT
4.		GYPSUM CEILING OF 9'-0" HEIGHT

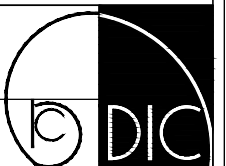
**PROJECT:-**  
**PROPOSED LAYOUT PLAN OF**  
**STATE BANK OF INDIA AT**  
**GONIANA**

**TITLE:-**  
**CEILING PLAN**

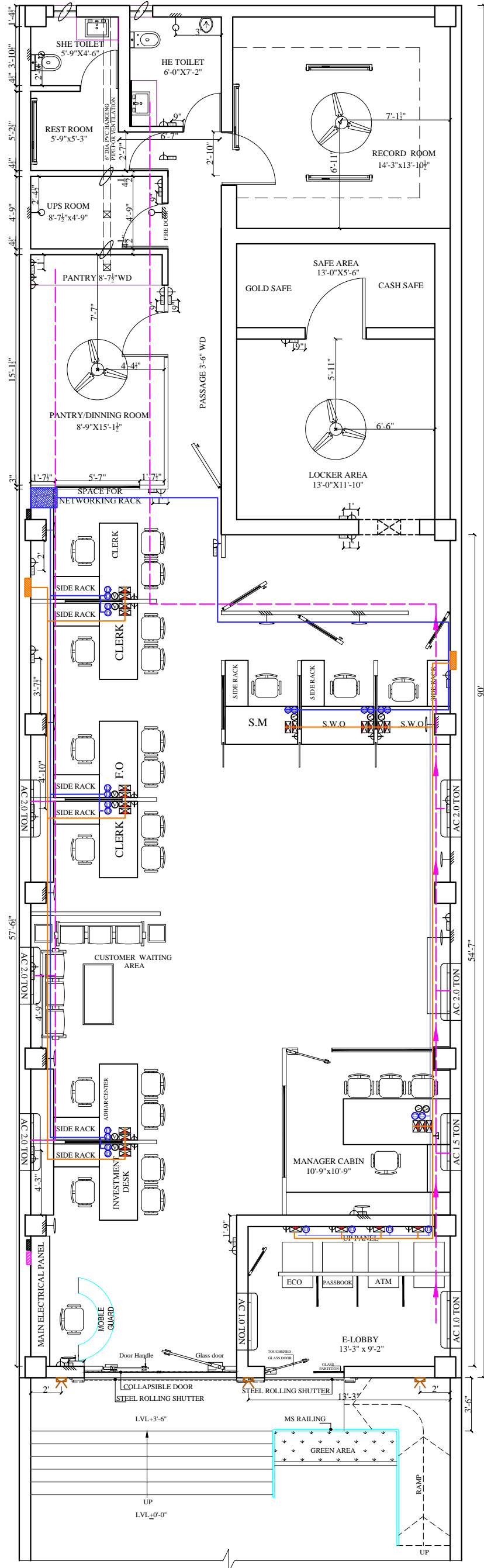
**DATE :-** 18.08.2020  
**SCALE:** N.T.S  
**DWG No.** DIC/2K21/GON/13

**SIGNATURE AND SEAL**  
**FOR ARCHITECT**

**design innovations**  
 ARCHITECTS, INTERIOR DESIGNERS, PLANNERS  
 #445, URBAN ESTATE, PHASE II PART II, BATHINDA  
 PH: 0164-2212131 (O) 98154-81651 (M)







ELECTRICAL WORK	
SYMBOL	ITEM NAME
	Computer Conduiting and wiring ckts
	Data Conduiting and wiring ckts
	Refrigerent Copper pipe
	AC Circuit wiring
	Computer UPS DB
	Light Points DB
	AC DB
	Tag Block
	Data Rack

ELECTRICAL WORK		
SYMBOL	ITEM NAME	MOUNTED H.T FROM F.F.L
	SWITCH BOARD (normal and Essential)	3'-6"
	CEILING FAN	----
	4 FEET TUBE LIGHT	9'-0"
	30 watt LED Flood Light	----
	WALL MOUNTED FAN /CABIN FAN	AS PER SITE Condition
	1x36 E LED CEILING LIGHT FITTING RECESS/ SURFACE MOUNTED	----
	6/16 AMP SOCKET	----
	3X6A SOCKET AND 16A SWITCH WITH INDICATOR	4'-0"
	EXHAUST FAN	8'-0"
	6 AMP SOCKET	----

**PROJECT:-**  
**PROPOSED LAYOUT PLAN OF**  
**STATE BANK OF INDIA AT**  
**GONIANA**

**TITLE:-**  
**GROUND FLOOR**  
**FURNITURE LAYOUT PLAN**

**DATE :-** 18.08.2020  
**SCALE:** N.T.S  
**DWG No.** DIC/2K21/GON/14

**SIGNATURE AND SEAL**  
**FOR ARCHITECT**

**design innovations**  
 ARCHITECTS, INTERIOR DESIGNERS, PLANNERS  
 #445, URBAN ESTATE, PHASE II PART II, BATHINDA  
 PH: 0164-2212131 (O) 98154-81651 (M)

