

**SBI ALTHARA JUNCTION BRANCH -  
GROUND FLOOR (RENOVATION) -  
DWG 1 DT. 28.3.23.**

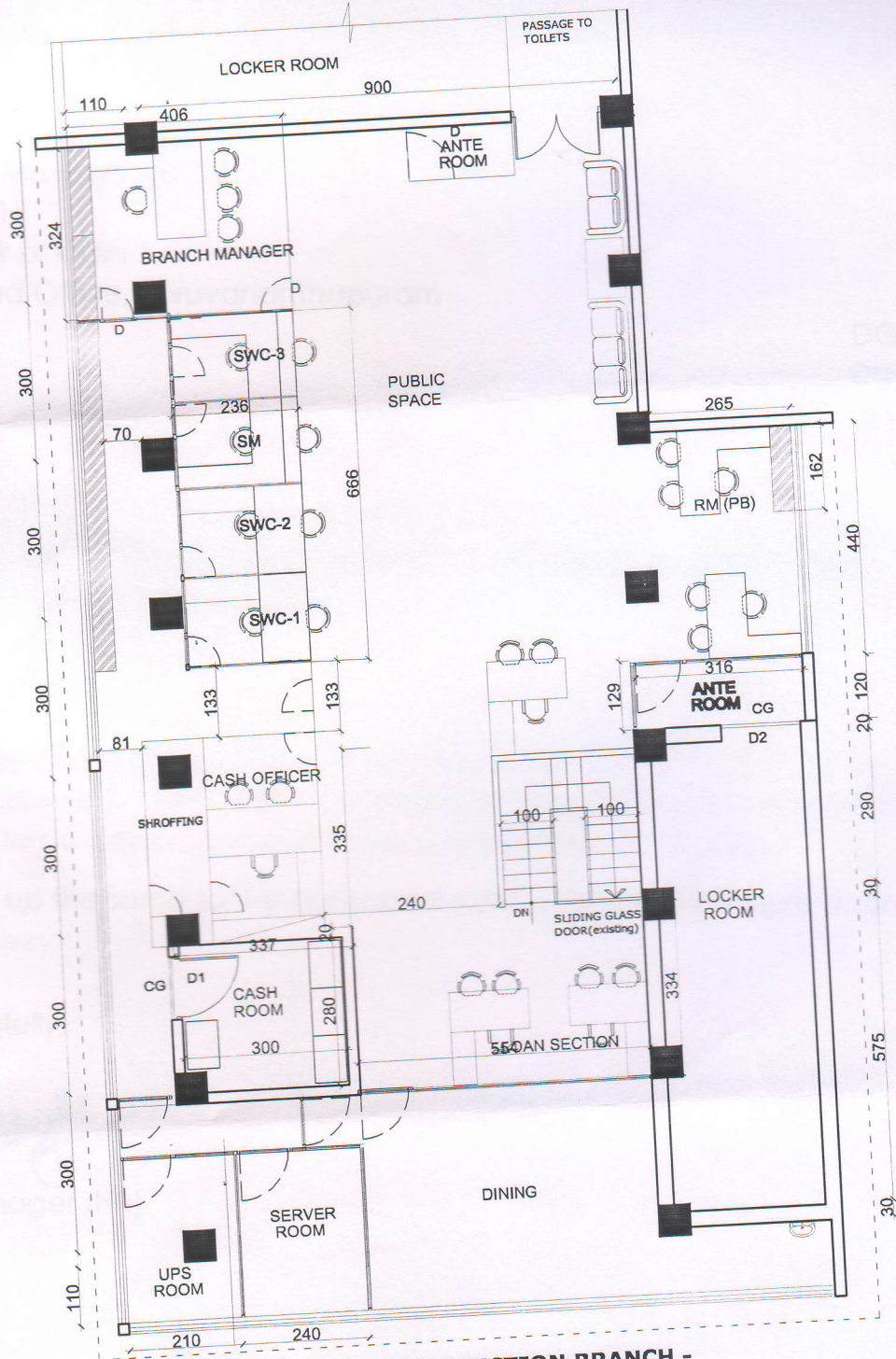


*[Signature]*  
28/3/23  
MANAGER(CIVIL),  
AO TVM.

*[Signature]*  
06/04/23  
BRANCH MANAGER,  
SBI ALTHARA BRANCH.

*[Signature]*  
CHIEF MANAGER(OPERATIONS),  
RBO-I TVM.

*[Signature]*  
REGIONAL MANAGER,  
RBO-I TVM.



**SBI ALTHARA JUNCTION BRANCH -  
FIRST FLOOR (RENOVATION) - DWG 1  
DT.28.3.23.**



*[Signature]*  
28/3/23  
MANAGER (CIVIL),  
AO TVM.

*[Signature]*  
CHIEF MANAGER (OPERATIONS),  
RBO-I TVM.

*[Signature]*  
06/03/23  
BRANCH MANAGER,  
SBI ALTHARA BRANCH.

*[Signature]*  
REGIONAL MANAGER,  
RBO-I TVM.